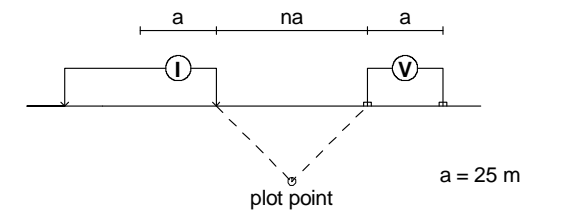


COMPOSITE SECTION PLOT L2000S

Modified Pole-Dipole Array



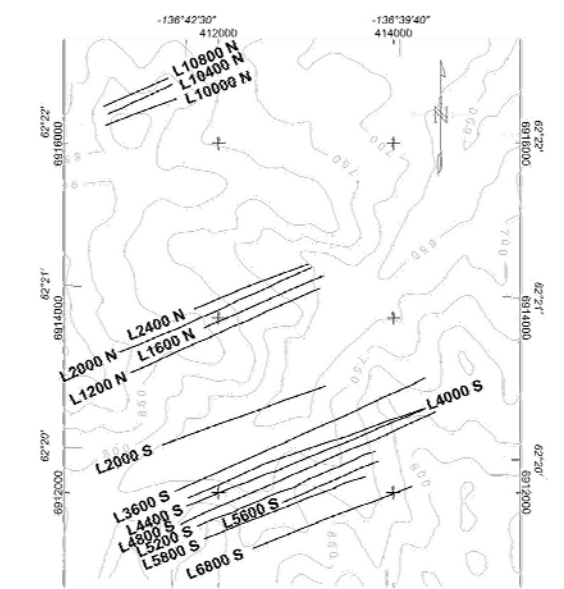
Stationary electrode at 1000W (moving E).

Receiver: Iris ElrecPro

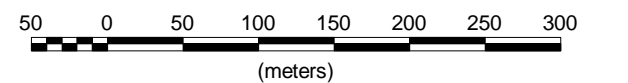
Transmitter: GDD Tx-II 3.6kW

Data File: Line 2000S-25m-final.xyz

Dates Surveyed : May 09, 2007



Scale 1:5000



No Vertical Exaggeration

All drill holes noted in RED are off section

WESTERN COPPER CORPORATION

INDUCED POLARIZATION SURVEY

CARMACKS COPPER PROJECT

COMPOSITE SECTION L2000S - 25m DIPOLES

Mining District: Whitehorse

NTS: 115 I/07

Job: WRN-7506-YT

Datum: Local Grid

Drawn by: GH

Date: 18 Dec 07

AURORA GEOSCIENCES LTD.